



R.140 Eucalyptus Gray, Cement Mate

This kitchen stands out for its innovative design, with a charming contrast between its Eucalyptus Gray and Cement Mate laminate finishes and Xtone Nylo Black by Urbatek. Different work spaces have been included and the kitchen also stands out for its high storage capacity, partly thanks to the stylish addition of basket-type shelves to keep everything easily within reach as you cook. In short, this is a functional kitchen conspicuous for its high-quality finishes.

1 FINISHES

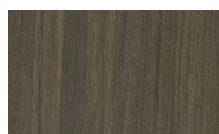
Wood imitation
Imitación de madera



Eucalyptus Blond



Eucalyptus Gray



Eucalyptus Candy



Eucalyptus Smutty



Etimoe Ice



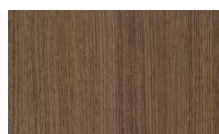
Etimoe Land



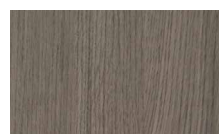
Etimoe Night



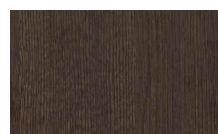
Roble Orgánico



Roble Tierra



Roble Arenado



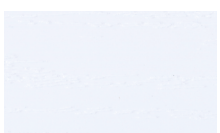
Roble Pardo



Etimoe Land



Roble Negro



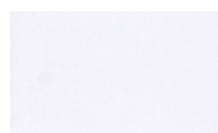
Blanco Orgánico



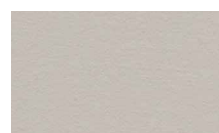
Niebla



Zinc



Blanco Núbol



Bisón